



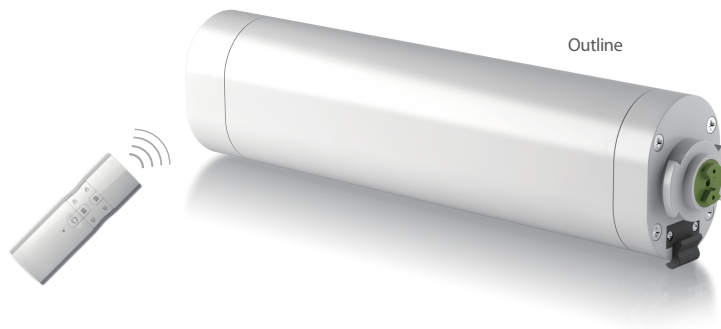
AC CURTAIN MOTOR

DT52E

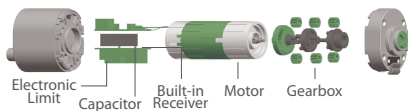


E: Electronic Radio

- Electronic Memory limit + Built-in receiver + Resistance and stop function
- + Light touch-start function + Power off manual function
- + External dry contact switch function



Inner structure picture



Motor Type Explanation

DT **52** **E** - **45** / **20**
 Curtain Motor Dimension Code Electronic Type Rated Torque (W) Open/Close Speed (cm/sec)

Technical Data		Safety Curtain Weight (Kg)	Rated Power Input (W)	Open/Close Speed (cm/sec)	Rated Current (A)	Continuous Running Time (min)	Ingress protection (IP)	Max. Limit Turns (Turn)	Track Length (m)	Weight (kg)
220V / 50Hz										
		Product Certificate CE RoHS								
DT52E Electronic Radio	DT52E-45/20	50	45	20	0.23	4	20	∞	≤12	1.10
	DT52E-75/20	100	75	20	0.34	4	20	∞	≤12	1.10

